

# Radio interference filter, single-phase, low leakage current HLE 310-230/8



Picture shows HLE 310-230/16

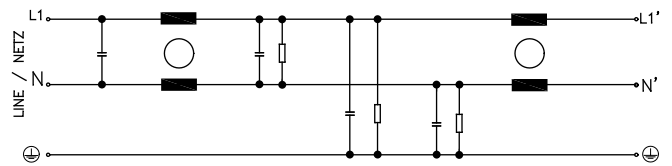
## Advantages

For enhanced requirements
Low leakage current
Single-stage filter concept
Efficient filter effect against line-bound interference emissions
Increase in the interference immunity of the connected consumer

## Applications

Radio interference suppression filter for line-side interference suppression of single devices, frequency converters or as group interference suppression.

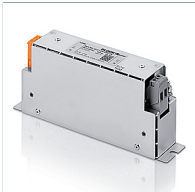
## Sample application



## Standards

Radio interference suppression filter to DIN EN 60939-2

## Approvals



## Radio interference filter, single-phase, low leakage current HLE 310-230/8

Type		HLE 310-230/8
Electrical data	Special features	
	Characteristics	Suitable for the medical field
	Operating data	
	Rated voltage	250 Vac
	Voltage range	0 - 250 Vac
	Rated current	8 A
	Leakage current (50 Hz)*	<3.00 mA
	Rated frequency	50 - 60 Hz
	Oversrating Capacity	150 %, shortly
	Environment	
	Ambient temperature max.	50 °C
	Climatic category	25/085/21 [in accordance with EN 60068-1]
	Safety and protection	
	Protection index	IP 20
	Type	Metal enclosure
	Safety class (prepared)	I
	Test voltage	1700 Vdc Phase/Phase, 2700 Vdc Phase/PE
Notes		
*	Leakage current measured against the maximum permissible input voltage fluctuation in accordance with IEC 38 ±10 %	
Order numbers		
<b>Order Number</b>	<b>HLE 310-230/8</b>	

Type		HLE 310-230/8
Mechanical data	Terminal and mounting	
	Terminals phase	Screw clamp, 4 mm <sup>2</sup>
	Terminals PE	Bolt, M5
	Fixing method	Mounting lugs
	Fixing screws	M5
	Measures and weights	
Weight	0.58 kg	

